

# Birkdale QLD

House

Supported  
Independent Living



**House Size**  
4 bedrooms



**Support**  
24/7



**Bathrooms**  
2.5 bathrooms



**Location**  
4159



## Charm & convenience meet in the Bay

### About

Settle into a relaxed, social lifestyle with this charming Birkdale home, featuring two large living rooms, air conditioning, and a huge backyard with covered outdoor entertaining area. With shopping, public transport, and the beach just minutes from your doorstep, all your lifestyle needs are easily accessible.

### Available rooms

1 room available with built-in wardrobes.

### Tenants

Your potential housemates are two tidy male siblings in their 50s who enjoy cooking together, as well as shared trips to the cinema, local restaurants, and the beach.

### Accessibility

- Step at front of house
- Sliding door lip
- Standard bathrooms
- Suitable for tenants with minimal accessibility requirements

### Disability support

Multicap offers 24/7 support from our highly trained and friendly team.



1300 135 886

[multicap.org.au](http://multicap.org.au)



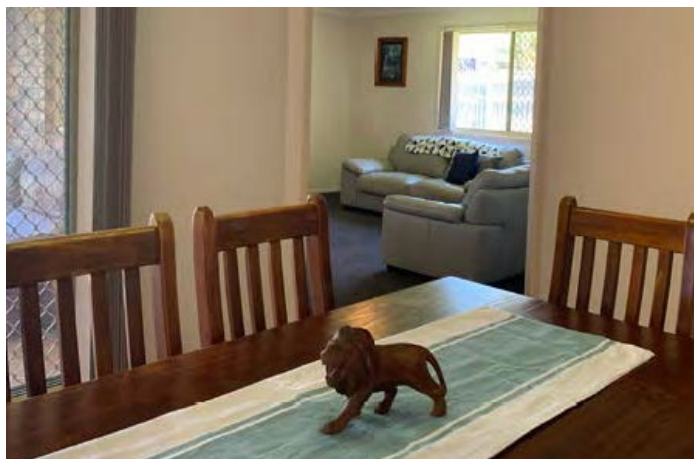
**MULTICAP**  
HIGH NEEDS DISABILITY SUPPORT

# Birkdale QLD

House

Supported  
Independent Living

Centrally located in Birkdale, this home offers a quiet, relaxed lifestyle, with the added convenience of easy access to all your favourite lifestyle activities including parks, beaches, restaurants, and shopping centres. Socialise with housemates over a sports match, or enjoy your own space in one of two large living areas.



## House Lifestyle

Residents enjoy a balanced, routined and social lifestyle. Weekly chores and meal prep are shared among housemates. This property is perfect for someone with minimal accessibility requirements seeking increased independence, with the benefit of a social home life in a centrally located, quiet street.

## Ideal Applicants

This property would be best suited to an easygoing, 40+ male who enjoys shared social outings and chatting about daily life with housemates.

## Important Information

Applicants must have Supported Independent Living (SIL) eligibility.

## Key features

- Two large, separate living rooms
- Large, fully fenced yard with gardens and outdoor entertaining space
- Large kitchen and dining areas
- Air conditioning in living room
- Three customer bedrooms with built-in wardrobes
- Additional staff bedroom with ensuite for 24/7 support
- Fully furnished living & dining areas
- NBN installed



## Nearby Features

- 1.5 km to local shopping centre, restaurants & medical centre
- 5 km to Capalaba shopping centre & cinemas
- 2 km to local train station
- 5 km to beach, parks, & picnic area
- 5.2 km to Multicap Capalaba Hub

Phone 1300 135 886 for more  
information or visit us at [multicap.org.au](http://multicap.org.au)

*always. always.*

  
**MULTICAP**<sup>®</sup>  
HIGH NEEDS DISABILITY SUPPORT