

SUPPORTED INDEPENDENT LIVING SOLUTIONS

Embrace your independence



all ways. always

 **MULTICAP®**

SUPPORTED INDEPENDENT LIVING

Multicap Home and Wellbeing

What is SIL?

Supported Independent Living (commonly known as SIL) is an NDIS-funded support that helps you live independently while building your skills.

SIL is commonly provided to multiple residents sharing one home, or can be provided independently to people living in their own home. SIL gives you access to support whenever, wherever, and however you need it.

Pathway to SDA with SIL



Customer has SDA in their plan



Contacts Multicap to discuss their needs



SDA builds needs and vacancies explored



Supported Independent Living Requirements identified



Transition plan or move in plan agreed

Because a home is so much more than just a house

Our personalised solutions create a supportive space for you to achieve your goals and enjoy increased independence while having 24/7 access to the support you need.

Multicap has a range of options to suit every lifestyle:



In-home support



Private accommodation



At one of Multicap's own fully accessible homes throughout QLD and northern NSW

Whatever your needs, we'll be there every step of the way to make sure your transition is as smooth as possible.

We're here for you.

At Multicap, we believe every person deserves to live life to the absolute fullest.

That's why we offer a range of tailored in-home support services to help you live the life you want.



How will Multicap support me?

We understand that breaking down your funding can feel overwhelming. Whatever your goals, Multicap can personalise your plan to make sure you get the most out of your supports.

We also help with a range of daily tasks including:



Personal care (i.e. showering, dressing etc)



Shopping and transport



Connecting with and participating in your local community



Meal prep and nutrition



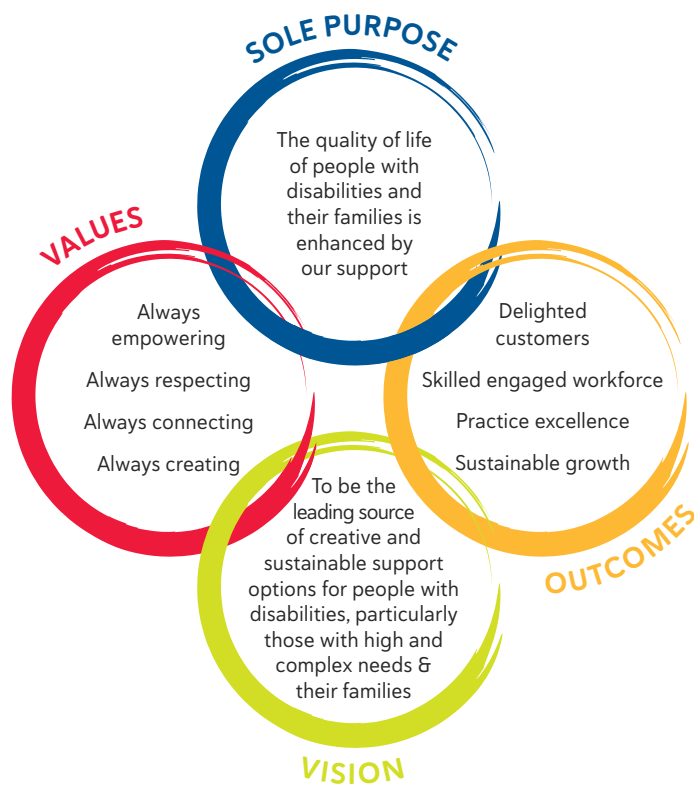
Development of daily living skills such as cooking and cleaning

Do I get a say?

Yes! At Multicap, we work with you to develop a program of support services that give you the freedom to live how, where, and with whom you want.

We achieve this by:

1. Having in-depth conversations with you and your family
2. Taking your preferences and personal circumstances into consideration
3. Preparing tailored support solutions that fit your lifestyle
4. Matching you with the perfect home to provide a comfortable and secure environment



MULTICAP®

For more information on local services
phone **1300 135 886** or visit **multicap.org.au**

