



**Come home to
spacious estate living**

Supported Independent Living Capalaba QLD | House



4 x Beds



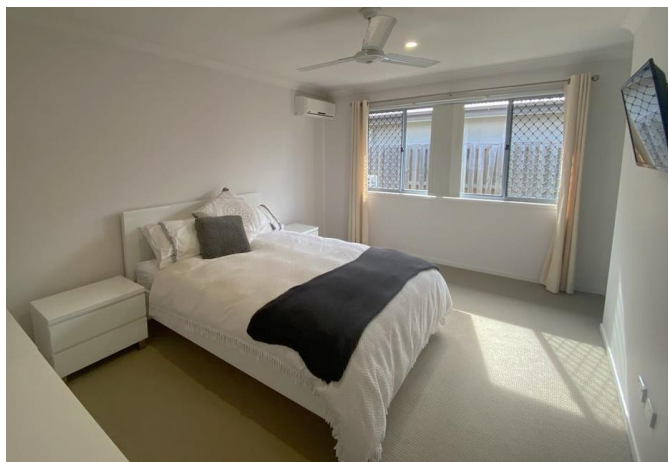
24/7



2 x Bath



4157



About

This single-storey, four-bedroom house is ideally located in a serene, family-friendly estate in the heart of Capalaba. The home features air-conditioning, two lounges, ensuite bathroom plus ample entertaining space, while offering easy access to local shops, amenities, transport options and parklands.

Available Rooms

1 room available

Tenants

Two easy-going male tenants (aged 40+) currently reside in this home.

Accessibility

- Wide doorways
- Single storey, no stairs
- Spacious, open plan living

Disability Support

Multicap offers 24/7 supports to match your needs and funding with our highly trained and friendly staff.



Supported Independent Living Capalaba QLD | House



Embrace estate living with this beautiful, low-set house in the heart of Capalaba. Boasting three spacious bedrooms with built-in robes, indoor and outdoor entertaining space, two bathrooms and open-plan living as well as dining areas. This home has everything you need to settle into your new independent lifestyle.

House Lifestyle

The property is suitable for someone seeking increased independence and who enjoys a balanced, social lifestyle. The house is situated in a quiet neighbourhood, with easy access to shopping, dining, parks and nature trails.

Ideal Applicants

This property would be best suited to male applicants aged 40-65 with minimal accessibility requirements.

Important information

Applicants must have Supported Independent Living (SIL) funding to live in this property.

Key Features

- Three spacious bedrooms with built-ins
- Main bathroom with separate toilet
- Ensuite bathroom and walk-in robe in main room
- Large, open-plan kitchen + dining area
- Two lounge areas with outdoor access
- Air conditioning in common areas
- Ceiling fans throughout
- Fully fenced backyard with 2 covered patios
- Double lock-up garage

Nearby Features

- Short walk to Multicap Capalaba Hub
- Short stroll to local parks
- 8-minute drive to shopping centre
- 2km to local restaurants
- 8km to Redland Hospital